

Promoted by:

Facilitated by:



EPSC Webinar

Thursday 7th September 2023

15.00 – 16.00 (CEST)

14.00 – 15.00 (GMT)

PPCL

EPSC webinars facilitated by knowledgeable solution providers offer the opportunity to learn and discuss on a specific safety topic.

Click [here](#) to register

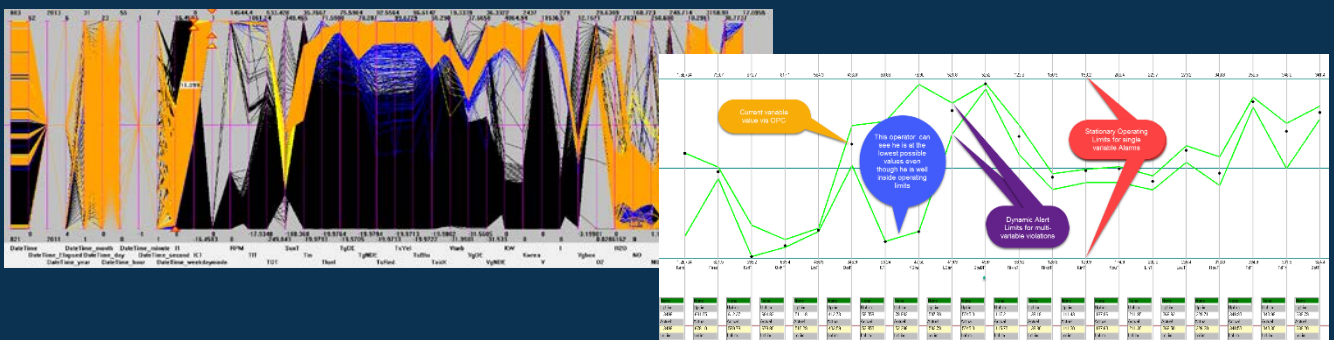
Understanding, Predicting and Mitigating Abnormal Process Events

Abnormal events are unplanned qualitative changes in operations from faults, disturbances, or errors. They can have substantial safety and financial impacts on operations.

This webinar looks at the use of Geometric Process Control (GPC) to visualize and understand historic events, model normal event-free operation, and provide operators with real time feedback when the process changes so they can act to prevent or mitigate an event.

Aspects to be discussed in an interactive setting

- Visualizing data for hundreds of variables
- Investigating historic process events
- Geometric models of normal operation for operator action
- Comparison with other technologies



For more information, contact Alan Mahoney | Alan.Mhoney@ppcl.com | +44 1753 893090